

UNITED METHODIST CHURCH OF SUMMIT

17 Kent Place Boulevard ▪ Summit, NJ 07901

THE DIALOGUE

April 2015



THE STAFF

Shawn Callender Hogan, *Senior Pastor*

JoAnne Teubner Prussak, *Director of Music*

Sherri Shumate, *Director of Christian Education*

Michael Stewart, *Property Manager*

Polly del Campo, *Office Administrator*

Wesley Center Preschool: 908-277-3686

MaryEllen DeJohn, *Director*

Telephone: 908-277-1700

Fax: 908-277-2330

E-mail: umcsummit@verizon.net

Web Site: umcsummit.org

WHAT'S INSIDE

FROM THE PASTOR.....Page 3-7

EDUCATION.....Page 8-10

MUSIC NOTES.....Page 11

**CHILDREN'S
PAGE**.....Page 12-13

BIRTHDAYSPage 14

FOR YOUR INFORMATION.....Page 14-15

“To Do” List.....Page 16

MONTHLY CALENDAR.....last page

In these weeks of Lent, we have traveled well.

Each Sunday we have made our way through the stories of the Book of Numbers, gaining wisdom by joining the Israelites in their journey to the Promised Land.

We have taken “Flat Jesus” along with us, and smiled as we affirmed God’s presence with us in all the varied places and circumstances life takes us.

Whether in places of joy or struggle, God is with us.

There is no greater promise!

Our Wednesday Lenten services took the ‘journey’ image more directly, asking:

*What word defines the **direction**
you seek for your life?*

***Who accompanies** and strengthens you
in the journey of faith?*

*What keeps you **refreshed**
on the journey of faith?*

*What **challenges** do you face
on your faith journey?*

*What keeps you **balanced and steady**
on the journey of faith?*

Based on these questions, we developed a work of art!



And as you receive this newsletter, we are, at last, right on the edge of Easter, bringing to that morning the insights we have gathered on the journey, while also sensing that what lies ahead is **utter gift**.

At this point in the journey we are reminded that the best of all comes not so much by way of our effort or our insight, it comes not through grasping/gaining/earning, but rather through releasing/surrendering/embracing... allowing wonder and awe and gratitude to take over as **new life** becomes both the destination and the journey.

Shawn Callender Hogan, Pastor

JOIN US THROUGHOUT HOLY WEEK

Palm Sunday, March 29, 2015

Sunday service at 10:30 am (in the Sanctuary)

With palms in hand we will recall Jesus' triumphal entry into Jerusalem and the beginning of his journey to the cross.

Maundy Thursday, April 2, 2015

7:00 p.m. (in the Chapel)

We will gather around the table, remembering the Last Supper and the vulnerability of the night before Jesus' death.

Good Friday, April 3, 2015

7:00pm (in the Chapel)

We will reflect on Jesus' final hours, expressing our gratitude for God's ultimate gift.

EASTER SUNDAY: CHRIST IS RISEN! April 5, 2015

Join us for **Breakfast from 9 am – 10 am** in the Social Hall,
then gather for worship at

10:30 a.m.: Easter Service (in the Sanctuary)

**Celebrate the Resurrection through music, prayer,
proclamation, and sharing in the Lord's Supper!**



Photo by Shyamal (Own work) [CC BY-SA 3.0 (<http://creativecommons.org/licenses/by-sa/3.0/>)], via Wikimedia Commons

The Future Begins Now!

**Mark your calendar:
May 31, 2015
11:30 am – 1:30 pm
Congregational Meeting**

Your voice is needed!

The Administrative Council has been working with a consultant to make strides in establishing our direction for the future. Who is God calling us to be?

On Sunday, May 31, join us as we all work together to name our identity as a church, setting the stage for our ongoing ministry.

Mark your calendar to join in this vital event!

January 30, 2015

IMAGINE NO
Imagine Ending Millions Of Deaths
MALARIA



Summit UMC
17 Kent Place Blvd
Summit NJ 07901-1922

6553 13

Dear Friends,

Each year, we work to achieve a world free of malaria deaths and debilitating sickness. Because of your generous gift of \$308.75 in 2014, we moved closer toward accomplishing this dream. Thank you.

You are a critical partner in the global effort to take action against this treatable, preventable disease of poverty. United Methodists together have reached a milestone of providing \$65 million in life-saving gifts and pledges. This includes seven million new dollars raised and pledged by United Methodists since Jan. 1, 2014!

Please visit our website www.imagenomalaria.org often for current information on the activities made possible by your gift. To receive periodic news updates, please send your email address to dbogle@umcom.org.

We have come this far because you have responded to the call to eliminate malaria as a disease of poverty. We have joined hands with worldwide partners. We have made tremendous progress. But the fight is not over. Please continue to give generously and to pray for success. Together we will carry the light to the end of the road home.

Should you have any questions regarding your gift, please contact Deeann Bogle at dbogle@umcom.org or at 866-521-1179.

Peace and Blessings,

Bishop Thomas Bickerton, Chair
Global Health Initiative of The United Methodist Church

Your contribution is tax deductible to the extent allowed. No goods or services were provided in exchange for this donation.

E.I.N. No. 31-0839059.



The people of The United Methodist Church | ImagineNoMalaria.org | P.O. BOX 440544 | NASHVILLE, TN 37244 | 866 521 1179



March 2, 2015

General Board of Global Ministries
425 Riverside Drive, New York, NY 10115
Conf-Dist-Donor: 336-26-00000238
212-870-3611 • umcmmission.org

Summit United Methodist Church
17 Kent Place Blvd
Summit, NJ 07901

Dear Friends in Mission:

Thank you for your gift received on 02/09/15 of \$243.00 to the Imagine No Malaria campaign through The Advance, the designated mission giving channel of The United Methodist Church. We are pleased to share that **100 percent** of your contribution will go towards eliminating one of the world's most deadly diseases. Giving through The Advance enables United Methodists to support one another in mission and ministry around the world. Thank you for partnering with us in God's mission.


Through gifts like yours, Imagine No Malaria has already distributed 1.2 million insecticide-treated bed nets throughout Africa. We have also trained more than 5,400 community health workers to personally deliver mosquito nets and measure usage rates. Today, because of the dedicated and generous support of people like you, **malaria's impact has been cut in half!**

Your gift supports the work of the United Methodist Church and our many partners including The Global Fund to Fight AIDS, Tuberculosis and Malaria; The United Nations Foundation; the International Federation of the Red Crescent and Red Cross Societies, Nets for Life®, and United Methodist central conferences across Africa.

Please visit www.imaginenomalaria.org to learn more about how your support is making an impact with a full range of interventions to combat malaria. If you have questions about your gift, please feel free to contact the Gift Processing Unit at 212-870-3611.

May God grant you a sense of hope and joy as you continue your support for mission and as we advance towards a day with no malaria.

Grace and Peace,



Roland Fernandes
General Treasurer
General Board of Global Ministries



Emily Miller
Associate General Secretary
Communications and Development
General Board of Global Ministries

Christian Education



At a *Wow, it's Wednesday* last month, our kids and youth arrived weary from a long day of school testing. That night, our "Step into my Shoes" series taught us about families in other countries where education is too expensive for most children to attend and about places where children don't have time to learn because they must work in the dumps to support their families. That night we had dinner with our Family Promise guests, played with our new friends, and helped them with their homework. We were reminded of our blessings and of the gifts we have to share.

The next week, children and youth led our weekly Lenten service and helped us reflect on the different challenges we each face in our faith journeys.

Last month, we also spent a Saturday spending time with children and their families living in a Newark shelter. We began our exciting six week intergenerational Sunday School series, "Let there be Stuff?" and evening series "Renewal." There are still three weeks to join us for these experiences. On **Saturday April 25**, we will journey to the CUMAC food bank in Paterson.

How are you growing in faith and service? When do you feel God with you? This month as we celebrate Easter, where do you feel Christ alive today? -*Blessings, Sherri Shumate, Director of Christian Education* sherri.shumate@gmail.com

Sunday School

9:30AM-10:15AM

Age	Teacher	Helper
Children PreK-3rd	Shanotte Smith	Dan Smith
Tweens 4 th - 7 th	Alison Johnson	Volunteers Welcome
Teens 8 th - 12 th	Sherri Shumate	Volunteers Welcome

We have three more exciting weeks of our intergenerational study, "Let there be Stuff?" This study is a chance to learn and grow in our faith together. Together we are giving thanks for God's gift of creation and learning ways that we can work together to care for these gifts God has given us.

All ages are welcome and all current Sunday school classes combine to meet in the Fellowship Room at 9:30AM. We meet Sundays at 9:30 April 12, April 19, and April 26.

Please Note: **Easter Sunday** there will be a breakfast at 9AM in the Social Hall and we will not meet for a study on Easter morning.

Next month, we will resume our traditional Sunday school classes.

***Mark your Calendar: Education Committee Meeting
Sunday, April 19 After Worship in the Fellowship Room***

Growing in Faith Together

“Let there be Stuff?”

Sundays, 9:30AM, Fellowship Room

This hands-on, interactive study produced by GreenFaith explores Biblical themes and ideas related to our responsibility for God’s creation. It explores the relationship between consumption, faith, and the health of the planet. It offers new information and opportunities for discussion and reflection about ways individuals, families, and church communities can make educated and conscious decisions that work to protect the earth and all of us as God’s creation. Please join us! The series will run on the following dates: Sundays at 9:30AM in the Fellowship Room April 12, 19, and 26. All are welcome!

“Renewal”

Sundays, 4PM, Fellowship Room

Across the nation people of faith are standing up for the environment. Evangelical Christians are fighting mountaintop removal, a coal mining process that is decimating Appalachia. Muslims are supporting sustainable farming. Jews are helping children experience the bond between nature and spirituality. People of all faiths are mobilizing in a religious response to global warming!

For the first time, the combined energy of these diverse activists is the driving force behind a feature-length documentary, entitled RENEWAL. Please join together to view some of these inspirational stories while reflecting on what they mean to us as Christians, and what responses we could have as people of faith. The viewings will occur at 4p.m. in the Fellowship Room with discussion to follow. The series will run on the following dates: April 12, 19, and 26. Please join us for these exciting stories of people whose passion and deep moral commitment are making a difference in a time of grave ecological threats.

For more information contact Brian Tipton (brianjtipton@gmail.com) or Sherri Shumate (sherri.shumate@gmail.com).

Worship Together

Sunday morning all children are invited to remain in worship with their families. Worship folders for children are available in the front and rear of the sanctuary. Bathrooms are located in the back of the sanctuary. For families who need it, staff childcare is available in the nursery on Sundays from 9:00am-Noon!

How will you celebrate Easter this year? How will you celebrate our risen Savior and give thanks for God’s great love for us?

Wow, It's Wednesday

4:15-6:00PM

Wow, It's Wednesday is an intergenerational Christian Education & music experience.

All are welcome to join us for food, fun, and fellowship.

4:15 Snacks: Creating & Clean-up

4:45 Wesley Choir & Homework

5:00 Adult Conversations

5:05 Devotions together in Chapel

5:20 Singing Believers Choir & Godly Playtime

6:00 Adjourn- Pick up Children

Special Wow Experience April 22:

Wednesday April 22 is Earth Day. During WOW, we will clean-up litter around our church.

Please wear comfortable clothes and shoes. We will gather in the kitchen for a snack and prayer and then begin clean-up around 5PM, followed by singing together. All are welcome!

WOW follows Summit's school calendar & will not meet on April 8!

Youth Opportunities in April

Thursday, **April 2**, 7PM, *Maundy Thursday Service*, Chapel

Friday, **April 3**, 7PM, *Good Friday Service*

Sunday, **April 5**, 9:00AM, *Easter Breakfast*, Social Hall

Sunday, **April 12, 19, 26**, 9:30AM, *"Let there be Stuff?"* Fellowship Room

Sunday, **April 12, 19, 26**, 4PM, *"Renewal,"* Fellowship Room

Saturday, **April 18**, 5-7PM, *Bowling*

\$15.99 per person for pizza and two hours of unlimited bowling.

<http://www.plazalanesbowling.net/>

Wednesday, **April 22**, 4:30-6PM *Earth Day Clean-Up Event*

Saturday, **April 25**, 11-2, *CUMAC Food bank Trip*, Paterson NJ

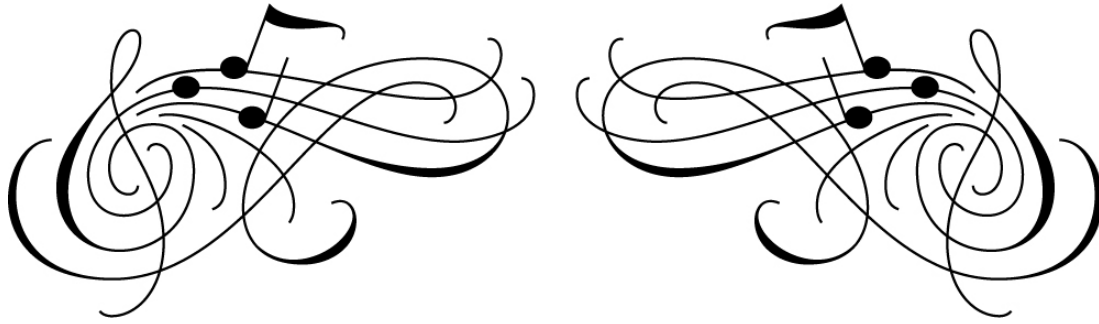
and in May....

Mark your Calendars for these Upcoming Opportunities:

*Parent's Night Out: Saturday, **May 2**, 5-8PM*

*Jersey Shore Mission Trip: Friday, **May 15- Sat. May 16***

*Christian Education Sunday: Sunday, **May 31***



MUSIC NOTES

Joanne Teubner Prussak, Music Director

Sing praises to the Lord, for He has done gloriously; let this be known in all the earth.

Wesley Choir, Singing Believers, Believer Quintet

These choirs are preparing for Palm Sunday and Easter worship. Rehearsals for the Wesley Choir and the Singing Believers (part of *Wow, It's Wednesday*) are at 4:40pm and 5:15pm respectively. The Believer Quintet rehearses on Saturday at 12:45pm. **All choirs will have a warm-up on March 29 and April 5 at 10:15am in the Sanctuary** to prepare for worship. Please have your robes on and be seated in the front pew. Let us praise the Lord with our Hosanna and Alleluias.

Hand Bell Choir

Our Hand Bell Choir rehearses on Sunday mornings at 11:30am in the Sanctuary. The Bells will be singing for Palm Sunday and Easter worship. **Combined rehearsals with Chancel Choir will be after Holy Thursday worship, rehearsal will be in the Sanctuary at 8:00pm and again Easter morning at 9:45am.**

Contemporary Ensemble

Our Contemporary Ensemble meets after worship. We encourage singers and instrumentalists to join us. The ensemble uses the contemporary "Worship and Song" book. Come and raise your voices or your musical instruments in praise.

Chancel Choir

The Chancel Choir rehearses on Sunday mornings at 9:30am in the Chapel. The Choir sings at Sunday 10:30am worship and will sing for **Holy Thursday, April 2nd** – worship at 7:00pm **warm-up at 6:30pm**. We will rehearse **after worship service in the Sanctuary at 8:00pm** with the Bell Choir in preparation for Easter.

As is our tradition, we will be singing the Hallelujah Chorus from "The Messiah". Please come and join us in the Chancel area. We have additional music ready for you! Come and make a joyful sound with voices, trumpet and organ.

*"Easter is the ultimate day for singing our songs of praise and joy.
So let us sing to the God of our joy!"*

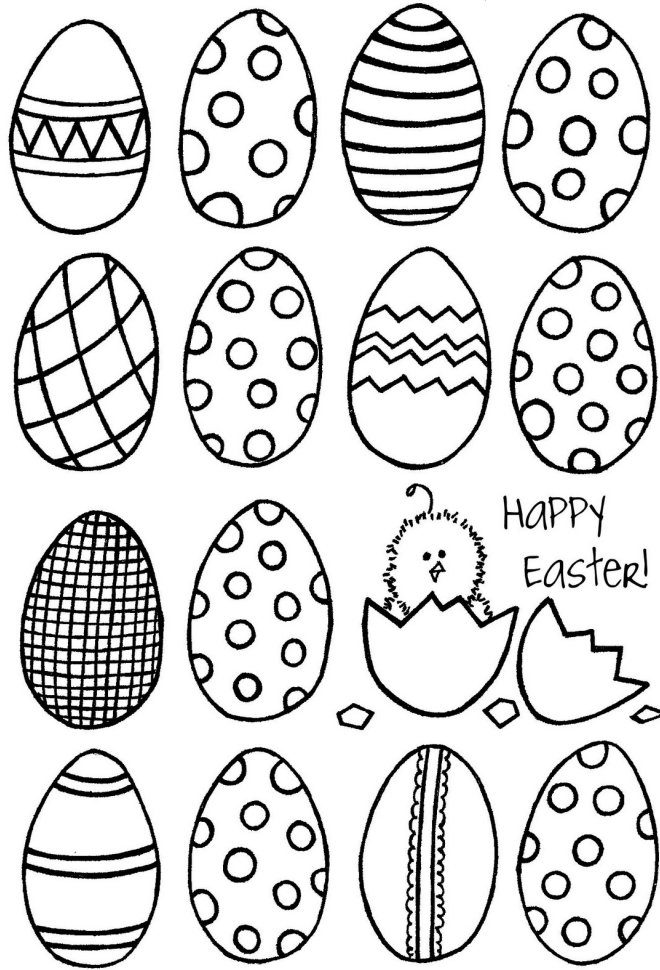
CHILDREN'S



When Mary came to Jesus' grave it was opened and He was gone. He had risen. Matthew 28:1-7

COLORING
PAGE

CHILDREN'S



COLORING

PAGE

FOR YOUR INFORMATION:

CAUSE



Like all "**first Sundays of the month**" we collect nonperishable food items for CAUSE, the United Methodist food pantry in Jersey City. Drop off your items on your way into worship; feel free to leave them on the sanctuary pew near the entrance.

FACEBOOK



Do you follow our Church's Facebook page? There you can find reminders of church activities, links to national and global articles of interest, thought - provoking articles, and educational materials. [Join us in our Facebook conversation today!](#)

SAVE THE DATE – FREE FISHING DAYS!



Do you like to fish? Have you heard of New Jersey's free fishing days? The first of these for 2015 will take place on **Saturday June 13th**, any resident may fish on New Jersey's public waters without a license or trout stamp. A few of us are hoping to rent some kayaks (weather permitting) and spend the day paddling & fishing the Delaware River.



Here are a few details:

- We would bring a bag lunch and meet at the river outfitter at 9am (<http://www.chamberlaincanoes.com/>) just over the Pennsylvania border.
- The outfitter will provide the kayaking gear and transport the group about 10 miles up river. The outfitter's cost is about \$45 per person.
- We will spend the day making our way back down (stopping for lunch) while fishing and enjoying the beauty of a day spent on the water.
- Depending on the current, we would return to the outfitter between 3:00 pm & 4:00pm and then head home.

*Please drop Bill Hogan an **email (whogan4@gmail.com)** if you are interested, additional information will be sent the beginning of June.*

BIRTHDAYS & Anniversaries in April:

1 Beverly & Stephen Brown	7 Debbie & Greg Vartan	21 Austin Wilkins
Chris Cunningham	14 Amanda Brown	22 Ian Cunningham
Elaine Stolpe	Ethan Kaup	Allie Wernsing
2 Sarah Shuttleworth	17 Dorothy & Mark Koernig	25 Veronica Clark
3 Joan Bollman	18 Valerie DeMartin	Graham Relf
Emily LaJeunesse	19 David Case	26 David Hughes
4 Betsey Chorpenning	Hannah Flammé	Debbi Picorale
	20 Kristine Rodriguez	28 Keith Miles
	Steven Rodriguez	

Annual May Day High Tea

CANCELED

Saturday, May 9, 2015

3pm - 5pm

at

United Methodist Church of Summit

17 Kent Place Boulevard

Summit, New Jersey 07901

APRIL

"To Do" List:

MEETINGS:

Education Committee – 4/19

Property Committee – 4/23

Worship Committee – 4/26

Ad Council - 4/27

MINISTRY:

CAUSE - donations every first Sunday

Prayer Warriors – Wednesdays

Knitting Ministry – Thursdays and Fridays

Trip to CUMAC Food bank – 4/25

Earth Day Clean-up – 4/26

AND MORE:

Holy Thursday Service – 4/2

Good Friday Service – 4/3

Holy Saturday – 4/4

Easter Sunday Service – 4/5

Easter Sunday Breakfast – 4/5

Earth Study Series – 4/12, 4/19, & 4/26

Confirmation Class – 4/19

APRIL 2015

Summit United Methodist Church ▪ 17 Kent Place Boulevard ▪ 908-277-1700

SUNDAY	MONDAY	TUESDAY	WEDNESDAY	THURSDAY	FRIDAY	SATURDAY
SUNDAY SCHEDULE: 9:30am – Sunday School (all grades) 10:30am – Worship 11:30am – Coffee Hour			1 Prayer Warriors -1:00pm Wow! It's Wednesday	2 HOLY THURSDAY Service 7pm (<i>Chapel</i>) Knitting Ministry 1pm (<i>Fellowship Room</i>)	3 GOOD FRIDAY Service 7pm (<i>Chapel</i>)	4 HOLY SATURDAY
5 EASTER SUNDAY Easter Sunday Breakfast 9-10am <i>(Social Hall)</i> <i>(No Sunday school)</i>	6	7	8 Prayer Warriors -1:00pm <u>No Wow! It's</u> <u>Wednesday</u>	9 Knitting Ministry 1:00pm <i>(Fellowship Room)</i>	10 Knitting Ministry 7:00pm <i>(Fellowship Room)</i>	11
12 Earth Study 9:30am & 4pm <i>(Fellowship Room)</i> Consultant "Listening Tour"	13	14	15 Prayer Warriors -1:00pm Wow! It's Wednesday	16 Knitting Ministry 1:00pm <i>(Fellowship Room)</i>	17 Knitting Ministry 7pm (<i>Fellowship Room</i>)	18
19 Festival of God's Creation @ worship Earth Study 9:30am & 4pm Education Committee Meeting - 11:30am Confirmation Class 5-6pm (<i>Social Hall</i>)	20	21	22 Prayer Warriors -1:00pm Wow! It's Wednesday	23 Knitting Ministry 1:00pm <i>(Fellowship Room)</i> Property Committee Meeting - 6:00pm	24 Knitting Ministry 7:00pm <i>(Fellowship Room)</i>	25 Trip to CUMAC Food bank 11:30am-2:00pm <i>(Paterson, NJ)</i>
26 Earth Study 9:30am & 4pm <i>(Fellowship Room)</i> Worship Committee Meeting – 12pm	27 Ad Council Meeting 7:30pm <i>(Fellowship Room)</i>	28	29 Prayer Warriors -1:00pm Wow! It's Wednesday	30 Knitting Ministry 1:00pm <i>(Fellowship Room)</i>		